

Iperjet DF

High-efficiency, low-noise
horizontal cartridges filter unit



Iperjet DF

- Iperjet DF 4-6-9
- Iperjet DF 4-6-9 CSS
- Iperjet DF 4-6-9 TC
- Iperjet DF 4-6-9 TRU
- Iperjet DF 4-6-9 TRU CSS
- Iperjet DF 4-6-9 TC TRU

Design

The filter units of the IperJet DF range are equipped with cartridges and are suitable for suction of smoke and dust. IperJet DF series is a plug & play unit, easy to handle and high performant.

Iperjet DF

18 Models

Motor kW4-P2-B5-V230/400-HZ50-IE2

PRA fan model.

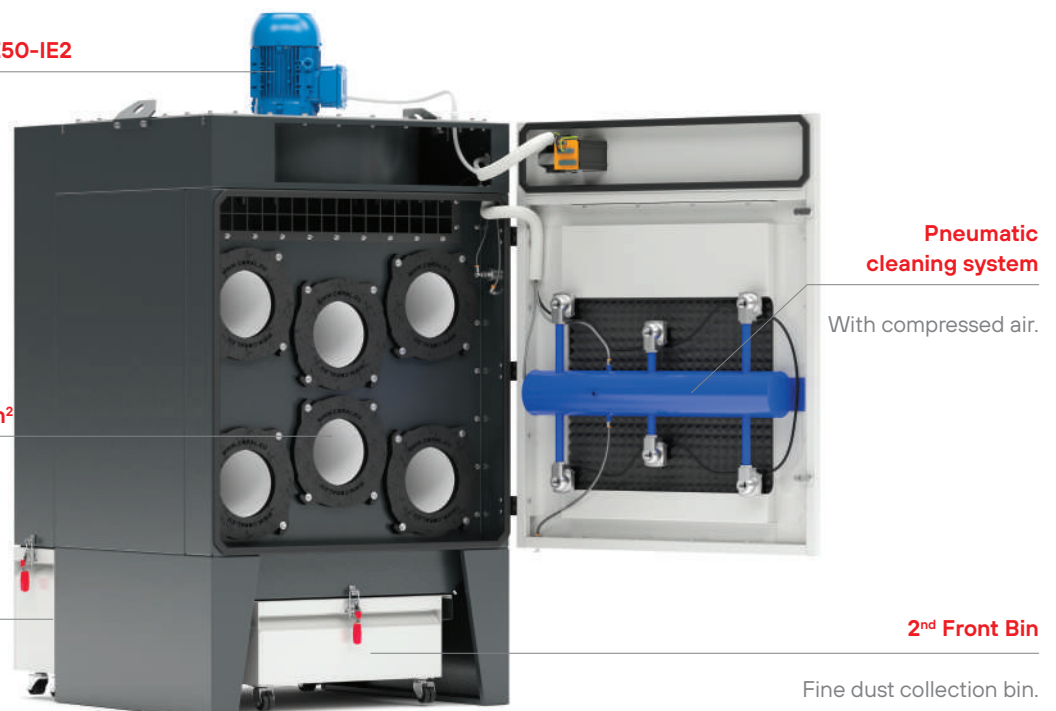
Cartridge filter

Ø325/4PS1-H750-M PES-270 g/m²

High-efficiency cartridges provide dust filtration.

1st Rear bin

Heavy dust collection bin.



Pneumatic cleaning system

With compressed air.

2nd Front Bin

Fine dust collection bin.

Highlights

- **Compact solutions**, easily installed even in tight spaces.
- **"Plug & Play"**: one electrical connection is all that is needed for immediate operation.
- Available in different sizes to suit every need.
- **Automatic compressed air cleaning system.**
- **Easy maintenance** because of horizontal cartridges.
- **Easy access**, quick and simple maintenance.
- **High extraction** capacity.
- **Low noise.**

Applications



Welding fumes



Dusts

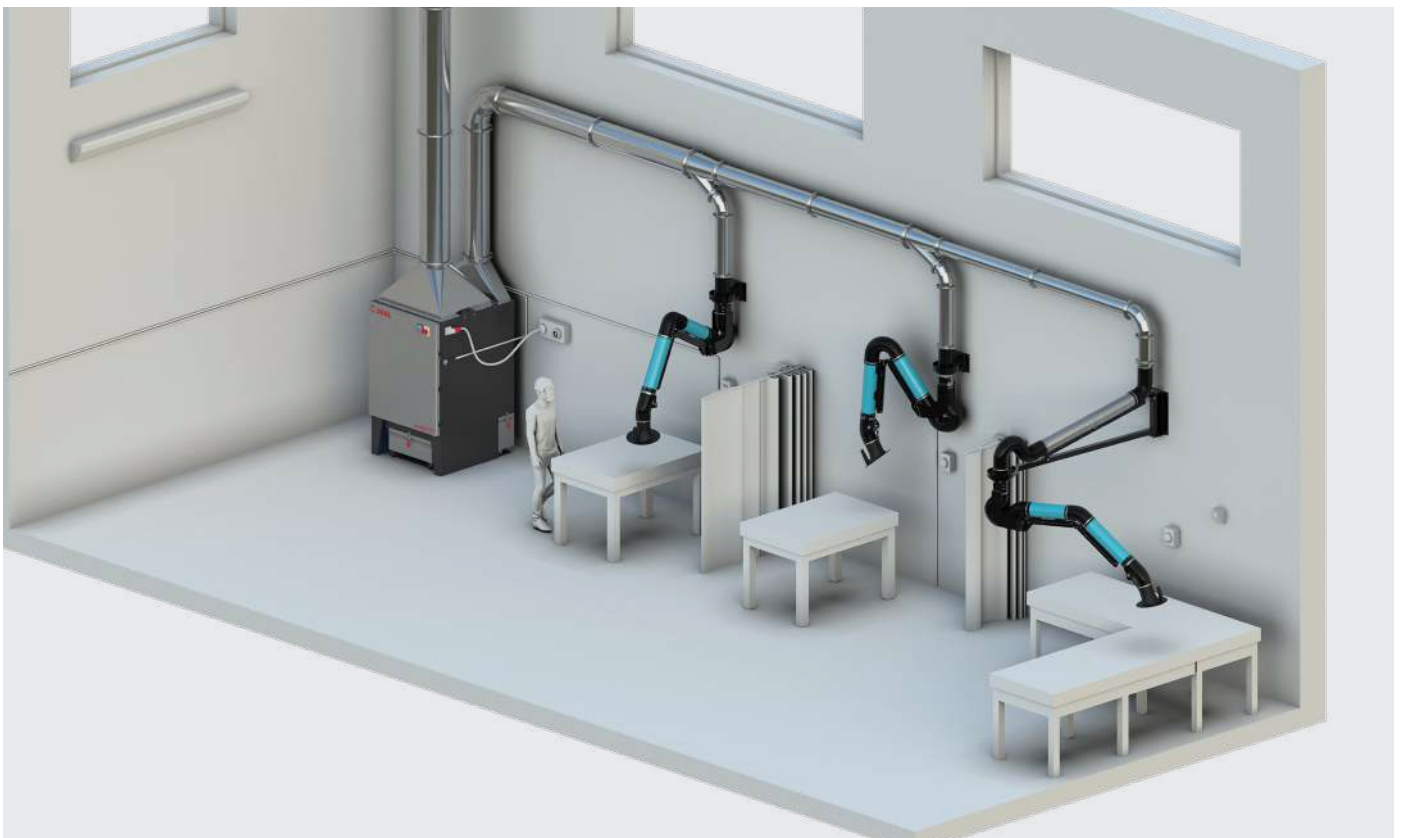


Thermal cutting

Clean air solutions

The new IPERJET DF horizontal cartridges filter finds application in the extraction and filtration of welding fumes, coarse and fine non-metallic dust, chips in small quantities, dust/fumes from thermal and laser cutting (Mod.Thermalcut).

The high-efficiency fan at the top of the unit guarantees a high extraction capacity and low noise levels. Where permitted, the filtered air is reintroduced into the working environment, resulting in considerable energy savings.



Filtration technology



IFA-BGIA: Institute for Occupational Safety and Health (Bonn - Germany)
AGW: Occupational Exposure Limit Value (Arbeitsplatzgrenzwerte)

DESCRIPTION AND PURPOSE

The purpose of the IFA-BGIA institute is to ensure the safety of workers in the workplace. Filter materials are analysed by establishing use classes L, M, H. BIA has also established an exposure limit value (AGW) above which worker safety is no longer guaranteed. The exposure limit value for a pollutant compound represents the concentration in the air that a person can breathe during a limited period of 15 minutes without immediate toxic effects. The IFA-BGIA test is carried out using the following parameters:

- Passage velocity of 0.056 m/s
- Quartz dust concentration $200 \pm 20 \text{ mg/m}^3$
- Variable particle size between 0.2 and 2 microns

CLASS OF USE	CONCENTRATION	MAX AUTHORISED RELEASED
M	Filtering out dust with AGW values $\text{AGW} \geq 0,1 \text{ mg/m}^3$	>99,9%

Easy access, quick and simple maintenance



The horizontal arrangement of the cartridges allows easy access and quick maintenance of the filter section.

Filter Media

■ Iperjet DF TC | DF TC TRU

■ Iperjet DF | DF CSS
Iperjet DF TRU | TRU CSS

MEDIA	MATERIALS	m ²	g/m ²	STANDARD	OPTIONAL
M PES	POLYESTER	13	270	■	
M PES/TF	POLYESTER/PTFE COATING	13	270		■
M-PES/AX/EXAM ACCREDITED	POLYESTER/ALUMINUM COATED /ANTISTATIC	13	270		■
M-PES+PTFE/MEMBRANE	POLYESTER -TEFLON MEMBRANE	13	290		■ ■
M PES+ PTFE/MEMBRANE-H	POLYESTER/TEFLON MEMBRANE/ FABRIC WITH H13 FILTRATION EFFICIENCY	13	270		■
M-NANOTECH	CELLULOSE WITH NANOFIBERS	21	114	■	■
M PES/OWR	POLYESTER/OLEO-HYDROPHOBIC	13	270		■
M PES/ FR	POLYESTER / FLAME RETARDANT		270		■

DF 1 | DF TRU

STANDARD



M PES

DF TC | DF TC TRU

STANDARD



M-NANOTECH

DF |DF CSS|DF TRU|DF TRU CSS

OPTIONAL



M-PES/AX/EXAM ACCREDITED

DF |DF CSS|DF TRU|DF TRU CSS

OPTIONAL



M-NANOTECH

DF |DF CSS| DF TC| DF TRU| DF TRU CSS| DF TC TRU

OPTIONAL



M PES/TF
M-PES+PTFE/MEMBRANE
M PES+ PTFE/MEMBRANE-H
M PES/OWR
M PES/ FR

Principle of operation

The IperJet DF filter unit consists of a pre-chamber, where most of the smoke/dust is separated and deposited in the first collection bin; the remaining particles are filtered by high-efficiency M-class cartridge filters before being returned to the environment. The finest filtered dust is deposited in the second collection bin. The air is filtered this way and passes through the high-efficiency fan located in the upper part of the unit and is expelled through a grille located on the top of the unit, guaranteeing high suction capacity and low noise. Cartridges are cleaned by an automatic compressed air cleaning system.

Iperjet DF



Iperjet DF TC (Thermalcut) | DF TRU CSS | DF TC TRU



Iperjet DF TRU (Single hopper)



Iperjet DF TRU CSS | DF TC TRU



- ① Dusty air inlet
- ①a Spark extinguisher mod css (optional)
- ② Pre-chamber (coarse dust)
- ③ Collection bins
- ④ Collection bin
- ⑤ Decanting area (fine dust)
- ⑥ Fan
- ⑦ Filter cartridges
- ⑧ Compressed air tank
- ⑨ Filtered air outlet
- ⑩ Economizer
ON/OFF thermal switch

Product range



Iperjet DF

Complete with horizontal IFA/BGIA M-PES cartridges for suction and filtration of welding fumes, coarse and fine dust, with automatic cleaning system and integrated high-performance, low-noise fan.

Cartridges (nr)	Power (kW)
4	2.2 3
6	4 5.5
9	7.5 11



Iperjet DF TRU

Complete with horizontal IFA/BGIA M-PES cartridges with a single hopper and collection bin for easy and quick discharge of filtered dust. It is suitable for indoor environments with high dust concentrations.

Cartridges (nr)	Power (kW)
4	2.2 3
6	4 5.5
9	7.5 11

Iperjet DF CSS | DF TC

DF CSS

Complete with IFA/BGIA M-PES horizontal cartridges for the extraction and filtration of welding fumes, both coarse and fine dust, the system includes a spark extinguisher with baffles at the air inlet, an automatic cleaning system and an integrated high-efficiency, low-noise fan.

Cartridges (nr)	Power (kW)
4	2.2 3
6	4 5.5
9	7.5 11



DF TC

Complete with horizontal IFA/BGIA M-PES (THERMALCUT) cartridges, it is the most suitable 'Plug & Play' solution for extracting smoke and dust from thermal cutting. Compact and easily positioned, it is suitable for indoor environments.

Cartridges (nr)	Power (kW)
4	2.2
4	3
6	4

Iperjet DF TRU CSS | DF TC TRU

DF TRU CSS

Complete with horizontal IFA/BGIA M-PES cartridges, with a single hopper and collection bin for easy and quick discharge of filtered dust. the system includes a spark extinguisher with air inlet grilles, an automatic cleaning system and an integrated high-efficiency, low-noise fan.

Cartridges (nr)	Power (kW)
4	2.2 3
6	4 5.5
9	7.5 11



DF TC TRU

Complete with IFA/BGIA NANOTECH horizontal cartridges, with a single hopper and collection bin for easy and quick discharge of filtered dust. the system includes a spark extinguisher with air inlet grilles, an automatic cleaning system and an integrated high-efficiency, low-noise fan.

Cartridges (nr)	Power (kW)
4	2.2
4	3
6	4

Technical features

Technical features		Model IperJet DF					
		4 4 CSS 4 TRU 4 TRU CSS	6 6 CSS 6 TRU 6 TRU CSS	9 9 CSS 9 TRU 9 TRU CSS			
Power	kW	2,2	3	4	5,5	7,5	11
Nominal Air Flow	m³/h	2200	3000	4000	5500	6500	7500
Number of cartridges	Ø325 mm H 750 mm	4	4	6	6	9	9
Filtering Surface	m²	37	48	72	72	108	108
Classification of cartridges		POLYESTER					
Pneumatic cleaning		YES	YES	YES	YES	YES	YES
Bin storage capacity (A+B)	lt	80/86		90/115		102/137	
DF TRU version	lt	65		65		65	
DF CSS version	lt	80/123		90/146		102/188	
R.P.M.		2865	2895	2900	2960	2915	2980
Fan Voltage STD	V	230/400		230/400		400/690	
	Hz	50		50		50	
Noise level	dB	76	78	80	81	83	85
Noise level with soundproofing plenum	dB	71	73	75	77,5	78	79,5
Total weight	kg	380	385	470	490	620	675
Total DFT RU weight	kg	415		500		760	
Static pressure	mmH ₂ O	150	150	100	110	130	170
Tank pressure		MAX 8 Bar					
Power supply of the valve		24 VAC					

Technical features		Model IperJet DF		
		4 TC 4 TC TRU	6 TC 6 TC TRU	9 TC 9 TC TRU
Power	kW	2,2	3	4
Nominal Air Flow	m³/h	2000	2500	3500
Number of cartridges	Ø325 mm H 660 mm	4	4	6
Filtering Surface	m²	84	84	126
Classification of cartridges		M-NANOTECH		
Pneumatic cleaning		YES	YES	YES
Bin storage capacity (A+B)	lt	80/123		102/188
DF TC TRU version	lt	65		65
R.P.M.		2865	2895	2900
Fan Voltage STD	V	230/400		
	Hz	50		
Noise level	dB	77	77	79
Noise level with soundproofing plenum	dB	70	70	73
Total weight	kg	460	550	752
Static pressure	mmH ₂ O	180	150	150
Tank pressure		MAX 8 Bar		
Electrical valves voltage		24 VAC		



Gallery



Standard Components

DF | DF CSS | DF TC | DF TRU
DF TRU CSS | DF TC TRU



Automatic compressed air cleaning

DF | DF CSS | DF TC



Front collection bins

DF | DF CSS | DF TC



Rear collection bins

DF TRU | DF TRU CSS | DF TC TRU



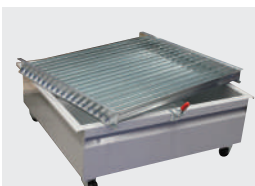
Single hopper with collection bin

DF TC | DF TRU CSS | DF TC TRU



Air inlet deflector spark arrester kit

DF TC | DF CSS



Dust separation grille front bin

DF | DF CSS | DF TC | DF TRU
DF TRU CSS | DF TC TRU



Economiser

DF | DF CSS | DF TC | DF TRU
DF TRU CSS | DF TC TRU



Thermal ON/OFF switch

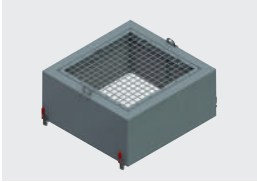
DF 9 | DF 9 TRU



Control panel

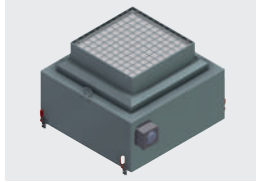
Options

DF | DF CSS | DF TC | DF TRU
DF TRU CSS | DF TC TRU



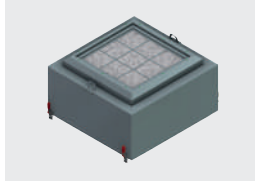
Soundproofing plenum with net

DF | DF CSS | DF TC | DF TRU
DF TRU CSS | DF TC TRU



Soundproofing plenum with hepa absolute filter H 13 (optional H14)

DF | DF CSS | DF TC | DF TRU
DF TRU CSS | DF TC TRU



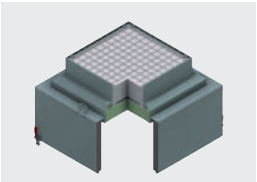
Soundproofing plenum with activated carbons

DF | DF TRU | DF TC



IPERJET stainless steel with food-grade cartridges

DF | DF CSS | DF TC | DF TRU
DF TRU CSS | DF TC TRU



Soundproofing plenum with activated carbon and hepa absolute filter H 13 (optional H14)

DF | DF CSS | DF TC | DF TRU
DF TRU CSS | DF TC TRU



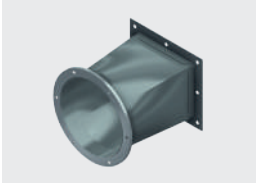
Differential pressure manometer kit to detect hepa filter h 13 clogging level - reading range 0 - 2500Pa

DF | DF TRU



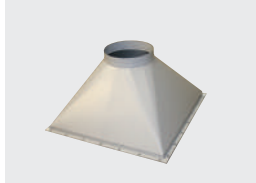
Air inlet connection
DF 4 Ø220mm
DF 6 Ø280mm
DF9 Ø350mm

DF CSS | DF TC |
DF TRU CSS | DF TC TRU



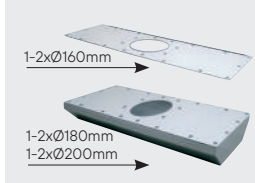
Inlet connection

DF | DF CSS | DF TC | DF TRU
DF TRU CSS | DF TC TRU



Air outlet connection
DF 4 Ø315/Lmm
DF 6 Ø350/L mm
DF9 Ø420/L mm

DF 4



Painted inlet plates and fittings for arms

DF 4



EVOLUTION NO-SMOKE

DF | DF CSS | DF TC | DF TRU
DF TRU CSS | DF TC TRU



Control panel (only 4-6)
Electrical cabinet with inverter

DF | DF CSS | DF TC | DF TRU
DF TRU CSS | DF TC TRU



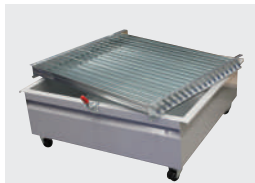
Control panel with AHEAD BASE

DF | DF TRU



MOD. SS
Air inlet spark arrester deflector kit

DF



Dust separation grille front bin

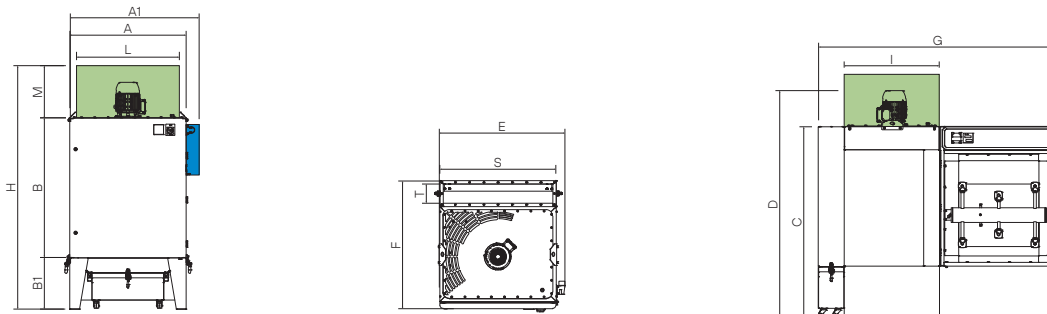
DF | DF CSS | DF TC | DF TRU
DF TRU CSS | DF TC TRU



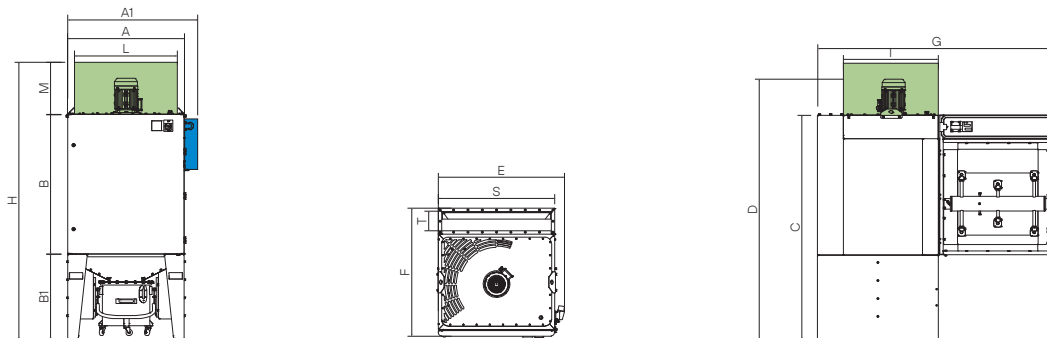
Fire extinguisher to be defined according to application

Overall dimensions

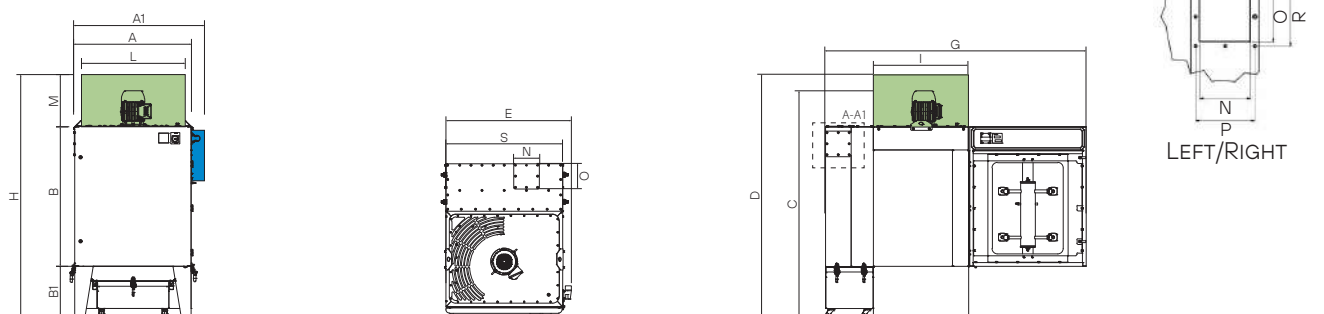
Iperjet DF



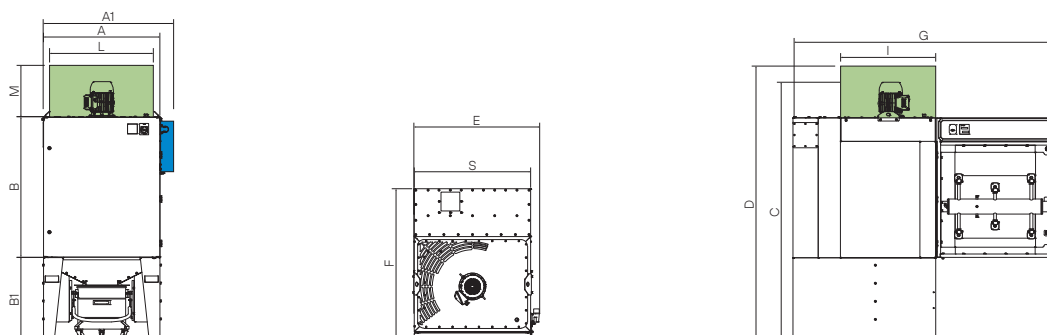
Iperjet DF TRU



Iperjet DF CSS | TC



Iperjet DF TRU CSS | TC TRU



Overall dimensions

MODEL	DIMENSIONS (mm)															
	A	A1	B	B1	C	D	E	F	G	N	O	P	R	S	T	
Iperjet DF 4	930	-	1120	490	1610	1915	1015	1210	2085	-	-			864	181	
Iperjet DF 6	1100	-	1315	490	1805	2130	1190	1210	2260					1036	181	
						7,5 kW	11 kW									
Iperjet DF 9	1300	1500	1490	490	1980	2340	2497	-	1300	2550				1235	181	
Iperjet DF 4 TRU	930	-	1120		1920	2225		1015	1400	2085				864	181	
Iperjet DF 6 TRU	1100	-	1315		2130	2450		1190	1420	2260				1036	181	
						7,5 kW	11 kW									
Iperjet DF 9 TRU	1300	1500	1490		2340	2658	2815	-	1540					1235	181	
Iperjet DF 4 TC DF 4 CSS	930	-	1120	490	1610	1900		1015	1400	2280	180	180	210	210	180	180
Iperjet DF 6 TC DF 6 CSS	1100	-	1315	490	1805	2100		1190	1420	2470	180	180	210	210	180	180
Iperjet DF 9 TC DF 9 CSS	1300	-	1495	490	1980	2320		-	1540	2725	180	220	210	250	180	220
Iperjet DF 4 TRU CSS DF 4 TC TRU	930	-	1120		1920	2225		1015	1400	2085				864	181	
Iperjet DF 6 TRU CSS DF 6 TC TRU	1100	-	1315		2130	2450		1190	1420	2260				1036	181	
Iperjet DF 9 TRU CSS DF 9 TC TRU	1300	1500	1490		2340	2658	2815	-	1540					1235	181	

MODEL Soundproofing plenum	DIMENSIONS (mm)			
	H	I	L	M
Iperjet DF 4	2050	900	928	440
Iperjet DF 6	2245	900	1100	440
Iperjet DF 9	2539	940	1250	560
Iperjet DF 4 TRU	2360	900	928	440
Iperjet DF 6 TRU	2570	900	1100	440
Iperjet DF 9 TRU	2900	940	1250	560
Iperjet DF 4 TC DF 4 CSS	2050	900	928	440
Iperjet DF 6 TC DF 6 CSS	2245	900	1100	440
Iperjet DF 9 TC DF 9 CSS	2539	940	1250	560
Iperjet DF 4 TRU CSS DF 4 TC TRU	2360	900	928	440
Iperjet DF 6 TRU CSS DF 6 TC TRU	2570	900	1100	440
Iperjet DF 9 TRU CSS DF 9 TC TRU	2900	940	1250	560

■ Soundproofing plenum (Optional) ■ Electrical cabinet (standard only in DF9)

Packaging information



MODEL	DIMENSIONS (mm) AxBxH	WEIGHT (kg)
Iperjet DF 4	1400 x 1150 x 2100	395
Iperjet DF 6	1400 x 1400 x 2250	505
Iperjet DF 9	1750 x 1400 x 2550	630
Iperjet DF 4 TRU	1400 x 1150 x 2450	490
Iperjet DF 6 TRU	1400 x 1400 x 2600	550
Iperjet DF 9 TRU	3000 x 1800 x 1450	820
Iperjet DF 4 TC DF 4 CSS	1600 x 1150 x 2100	460
Iperjet DF 6 TC DF 6 CSS	1400 x 1650 x 2250	520
Iperjet DF 9 TC DF 9 CSS	1750 x 1750 x 2250	790
Iperjet DF 4 TRU CSS DF 4 TC TRU	1400 x 1400 x 2450	500
Iperjet DF 6 TRU CSS DF 6 TC TRU	1750 x 1400 x 2600	560
Iperjet DF 9 TRU CSS DF 9 TC TRU	3000 x 1800 x 1800	830

MODEL Soundproofing plenum DF CSS DF TC DF TRU DF TRU CSS DF TC TRU	DIMENSIONS (mm) AxBxH	WEIGHT (kg)
Iperjet DF 4	940 x 940 x 850	70
Iperjet DF 6	1200 x 1000 x 850	90
Iperjet DF 9	1400 x 1150 x 1000	115

All images and values on this catalogue are indicative and can be subject to modification and improvements. CORAL reserves the right to change them without previous advice.



Made in Coral

Coral manufactures 100% of all the components that are part of an industrial extraction system within their facilities in Volpiano, just outside of Turin. The quality of materials that we use and our industry experience guarantee a production of high level in everything we make.

ITALIA
 MILANO p: +39 02 95.30.1003
 TORINO p: +39 011 99.80.141
 VICENZA p: +39 0444 34.93.98
 BOLOGNA p: +39 051 69.26.335

FRANCE
 LYON p: +33 4 74 944 562
 PARIS p: +33 1 60 868 069
 POITIERS p: +33 5 49 379 596

GERMANY
 LEVERKUSEN p: +49.214.312.663.20

UNITED KINGDOM
 LITTLEBOROUGH ROCHDALE p: +44 1 706 377344

MIDDLE EAST
 DUBAI UAE p: +971 56 1028130

INDIA
 BANGALORE p: +91 734 888 2333 - 2777

SINGAPORE
 SINGAPORE p: +65 88338991

U.S.A.
 KYLE, TX p: +1 480 796 5352



CORAL s.p.a.
 Corso Europa, 597 10088
 Volpiano (Torino) ITALY

p: +39 011 98.22.000
 e: info@coral.eu

coral.eu



For a cleaner future.